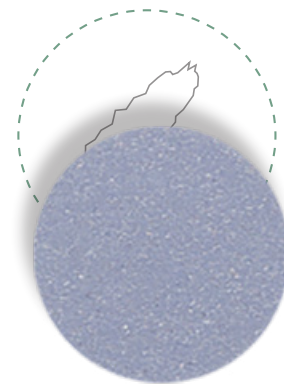
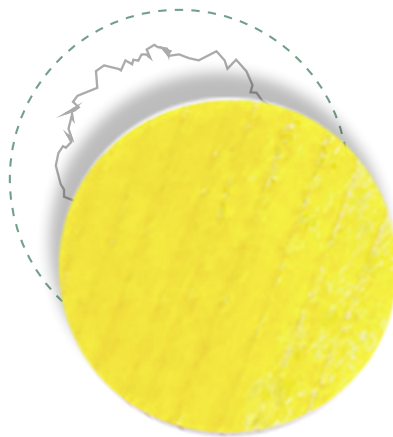
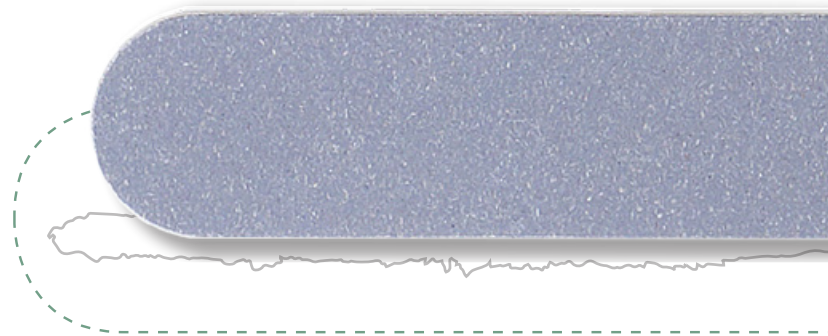
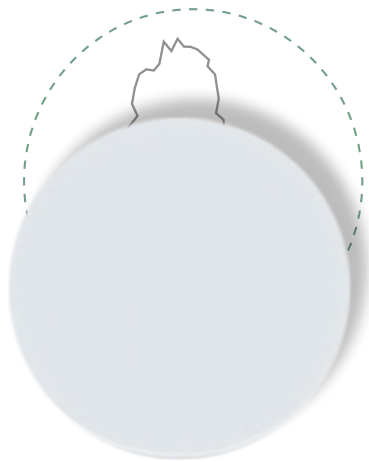


rondo[®]

rondoplex
rondoplan

The seamless repair system for formwork

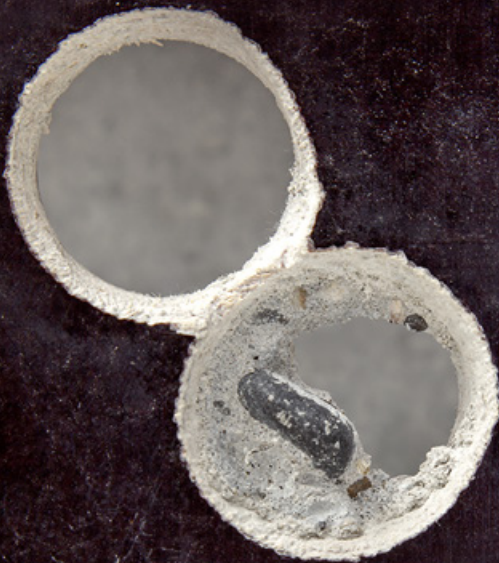


Herud·KG

Formwork accessories

Damaged formwork means time and money

If damages of the surface of shutterings are not repaired professionally before using the shuttering again, the concrete surface will show the outlines of the damage. The marks on the formwork surface have to be removed mechanically under immense effort. Repeatedly used unrepaired shuttering leads to more costly repairing of the surface of concrete due to deeper damages on the formwork surface.



Damaged formwork



Impression in concrete

The advantages of rondo

Fast & Efficient

Repair plywood shuttering in seconds

Economical & Effective

Smooth and flawless concrete surfaces with less effort

Flexible & Ecological

Custom solutions made with environmentally friendly materials

Cost-efficient & Lasting

Minium investment with maximum return of investment

Precise & Unequaled

German-made precision and efficiency

Rationell & clever

Fight damage before it develops



Formwork repaired with rondo



A perfect rondo result on the concrete surface



Just a few steps to the perfect repaired shuttering

1. *Before repairing the damaged spots, the shuttering has to be cleaned of concrete and dirt with the appropriate tools and aids.*



2. *The Router with rondo HM-switchblade cylinderhead drill must be adjusted to the corresponding thickness of the rondoplex plywood repair discs at the depth regulator of the machine. Do a testrun on old shuttering. After the adjustment of the drilling depth and a testrun, drill the hole on the damaged spot and turn off the machine.*



3. *Blow away shavings and dust.*



4. *Apply rondoglue or PU glue sparingly at the inside wall of the hole.*





5. *Put a rondoplex-plywood-repair disc in the hole*



6. *Use a piece of hardwood or plywood to fit in the rondoplex-plywood repair disc level.*

Long scratches and grooves can be repaired by putting in several rondoplex-plywood repair discs overlappingly. In this case, each rondoplex-plywood repair disc must be fitted exactly before putting in the next one overlapping. Working as described, even large damage can be repaired.

The result



After the glue has set, the shuttering is ready for work again.

Select the perfect rondo system for your formwork brand or repair needs

No damage is like the other. Knowing that, we created three different rondo repair systems. rondo 400 and 600 removes small damages.

rondoplex

A large range of surfaces to perfectly match your formwork

rondoplex formwork repairing spots are used for repair and regeneration of film - covered shutterings, large - surfaced shutterings and frame shutterings.

With rondoplex you can repair damages of the surface of shutterings such as scratches, impression marks, drilling holes and cuts easily, quick and at low cost. This helps you reusing your shuttering.

	Phenolic	G2	Sonoboard	3-S
Ø40.20 mm				
Ø60.20 mm				
	For use with: Alpi, Aluma, DOKA Framax, Faresin, Hünnebeck, Ischebeck, Noe, Paschal, PERI, Ringer, SGB, Sveza, Ulma, Uni Span, UPM	For use with: ILPA, Mayer Longlife, Schaltec	For use with: Hünnebeck, Manto Tecco, Noe Plast, Platinum, Sonoboard	For use with: DOKA, Kaufmann, Hiag, Lana, Mayer Ultralife, Pfeiffer

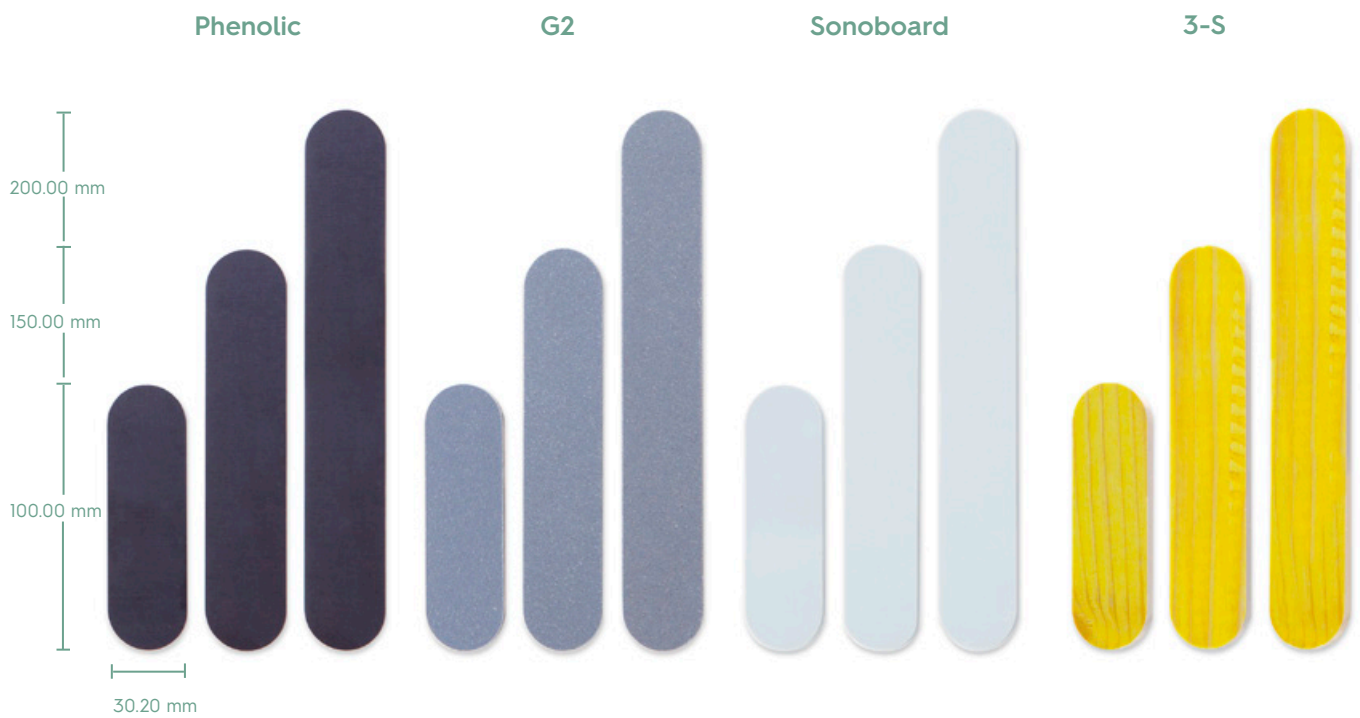
Greater or longer spots of damages can be repaired by using rondoplan repair strips. rondoplan comes in the sizes 100, 150 and 200mm.

rondoplan

Bringing damages down to size

Damages such as long cuts and scratches can be repaired by rondoplan formwork repairing strips.

Using our specially designed Herud hand router templates, larger damages can be repaired in no time.



For use with:
Alpi, Aluma, DOKA Framax, Faresin, Hünnebeck, Ischebeck, Noe, Paschal, PERI, Ringer, SGB, Sveza, Ulma, Uni Span, UPM

For use with:
ILPA, Mayer Longlife, Schaltec

For use with:
Hünnebeck, Manto Tecco, Noe Plast, Platinum, Sonoboard

For use with:
DOKA, Kaufmann, Hiag, Lana, Mayer Ultralife, Pfeiffer, Ulma

rondobox

All set with the rondobox

The rondobox contains a complete set with both rondo-system rondoplex 400 and rondoplex 600.

This ready-to-work kit allows you to start instantly with your repair work on shuttering.





rondobox contains:

- One electric hand router including accessories (Art. No. 9000)
- rondogriff handles
- HM switchblade cylinderhead drill bit 40.1 mm diameter for rondoplex 40.2 mm repair discs (Art. No. 400 W)
- HM switchblade cylinderhead drill bit 60.1 mm diameter for rondoplex 60.2 mm repair discs (Art. No. 600 W)
- 12 mm collet
- 500 rondoplex repair discs 40.20 mm diameter
- 300 rondoplex repair discs 60.20 mm diameter
- 2 HM Switchblades for cylinderhead drill bit 40.1 mm diameter (Art. No. 400 RPL)
- 2 HM Switchblades for cylinderhead drill bit 60.1 mm diameter (Art. No. 600 RPL)
- 4 HM side cutters (Art. No. 4/600 WPLV)
- 1 VHM centrepole (Art. No. 4/600 ZSP)
- 1 Torx screwdriver, large (Art. No. 4/600 SCHDG)
- 1 Torx screwdriver, small (Art. No. 4/600 SCHDK)
- Screwdriver, large (Art. No. 4/600 SCHDM)
- 1 rondoglu bottle, high performance waterproof white glue certified for rondoplex and rondoplan, 600 g (Art. No. 600 WL)
- 1 resin remover, can with 1 l (Art. No. 600 HL)
- Steel box (Art. No. 4/600 BK)

rondoplan set



rondoplan set contains:

- One electric hand router including accessories (Art. No. 9000) with rondogriff handles
- Aluminum template for heavy duty plunge router, including distance parts for 100, 150, and 200 mm rondoplan repair strip
- 12 mm collet
- HM switchblade groover (Art.No. 301 W2)
- HM switchblade 15x12x1,5 mm, 10 pieces/box (Art. No. 3011512)
- HM switchblade 12x12x1,5 mm, 10 pieces/box (Art. No. 4011212)
- 100 rondoplan plywood repair strip, phenolic resin film brown, 100,00 x 30,20 mm (Art. No. 1003042)
- 100 rondoplan plywood repair strip, phenolic resin film brown, 150,00 x 30,20 mm (Art. No. 1503042)
- 100 rondoplan plywood repair strip, phenolic resin film brown, 200,00 x 30,20 mm (Art. No. 2003042)
- 1 Anti-slip coating (Art. No. 910500)
- 1 rondoglu high performance waterproof white glue for rondoplan (Art. No. 600 WL)
- 1 resin remover, can with 1 l (Art. No. 600 HL)
- 1 Torx screwdriver, large (Art. No. 4/600 SCHDG)
- 1 rondo-screwdriver, large (Art. No. 4/600 SCHDM)
- 2 allen key for assembly

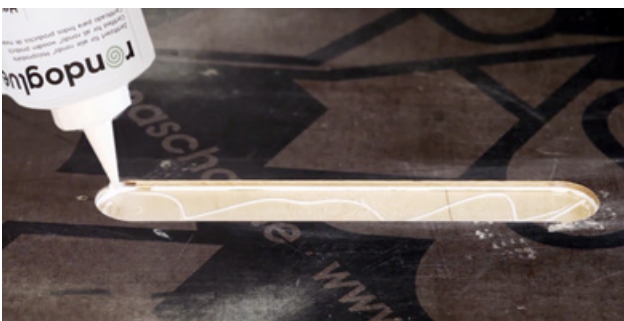
rondoplan repair steps



Before repairing the damaged spots, the shuttering has to be cleaned of concrete and dirt with the appropriate tools and aids.



The Router with rondoplan HMW 301 W2 switchblade groover must be adjusted to the corresponding thickness of the rondoplan plywood repair strips at the depth regulator of the machine. Do a testrun on old shuttering. After the adjustment of the drilling depth and a testrun, drill the hole on the damaged spot.



Blow away shavings and dust.

Apply rondoglu or PU glue sparingly at the inside wall of the hole.



Put a rondoplan-repair strip in the hole.

Use a piece of hardwood or plywood to fit in the rondoplan-plywood repair strip level.



After the glue has set, the shuttering is ready for work again.

Accessories

Working efficiently with the right tools by Herud KG

All rondo-products undergo strict testing and quality control. Our measure and quality management procedures before, while and after production guarantee permanent high and lasting rondo-quality.



Anti-slip coat for rondo plan template



Hand router for rondoplex and rondo plan

rondogriff, made out of high durable plastic mixture for a long lasting lifespan. Shockproof and durable in every condition. Perfect for drill and mill out your formwork for rondoplex and rondo plan products. Package includes also 2x Stainless steel Torx® screws for highest lifetime.

rondo HM cylinderhead drill 400 and 600 for rondoplex



rondorivets and fasteners for your formwork and shuttering needs



Screws rondo screws

Anti-slip coat
for hand router
baseplate



Our rondosil adhesive
that creates a
waterproof, protective
seal ideal for your
framework



Quality adhesives
perfectly suited for
fitting and gluing
rondoplex discs and
rondoplan strips into
shuttering



rondobrid high-strength hybrid glue,
flexible and permanently elastic
high-performance adhesive,
certified for all rondo plastic repair
systems, as well as coated formwork

Find more products at www.herud-kg.de



rondobrid/-glue testing procedure in our product development department



Over 20 years
of precision excellence.
And we guarantee it.

A family-run business, for two generations Herud KG has focused on quality and durability, becoming an industry leader in shuttering repair systems.

rondo®

Formwork repair system

With rondo you have all the advantages



FAST & EFFICIENT

Repair holes and scratches in plywood shuttering in seconds.



ECONOMICAL & EFFECTIVE

Best results with least effort:
Smooth and flawless concrete surfaces



FLEXIBLE & ECOLOGICAL

Custom made solutions made
of non-polluting materials



COST-EFFICIENT & LASTING

Rondo means a minimum investment with
a maximum of return as follow up repair
costs of shuttering sink.



PRECISE & UNEQUALLED

A unique alliance of highest precision
and efficiency.



RATIONAL & CLEVER

Fight damage before it develops.

rondo products:

rondoplex®
rondoplan®
rondosil®
rondobrid®
rondoglue®
rondorivet®
rondogrip®
rondogriff®



Herud·KG

Formwork accessories

Bundesstraße 41
D-79199 Kirchzarten

Fon +49 (0) 7668 90 23 88
Fax +49 (0) 7668 90 23 99

Warehouse: Hochstrasse 13,
D-79291 Merdingen

herud@rondoplex.com
www.rondoplex.com